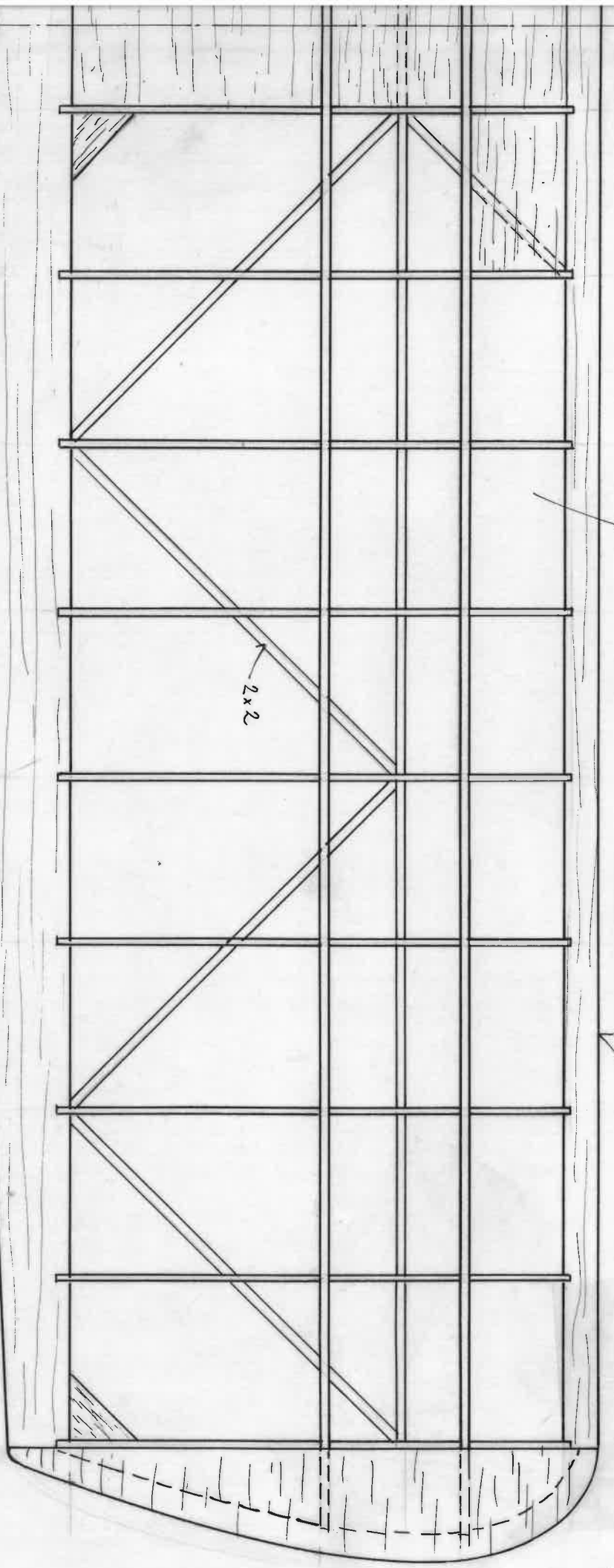


4/L

AREA 5,83 dm<sup>2</sup>

height 22graus

Sheet 1/8



2x2

BAMBOO  
φ 2

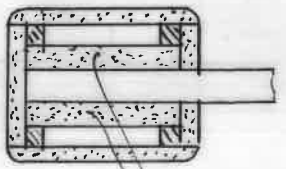
wire  
1,5mm

band and cement.

1/8" Shead (shead)

N  
N

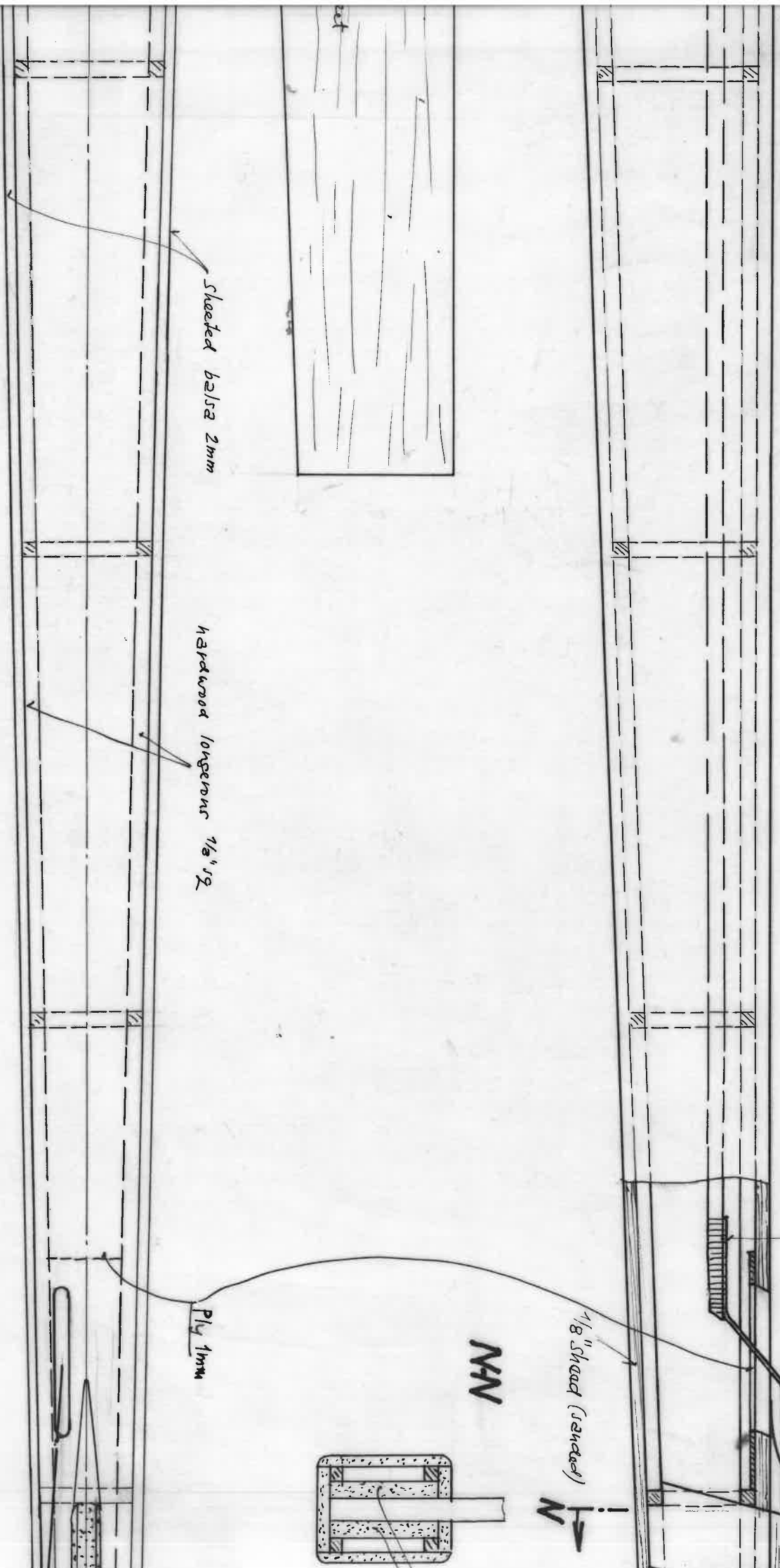
NAN



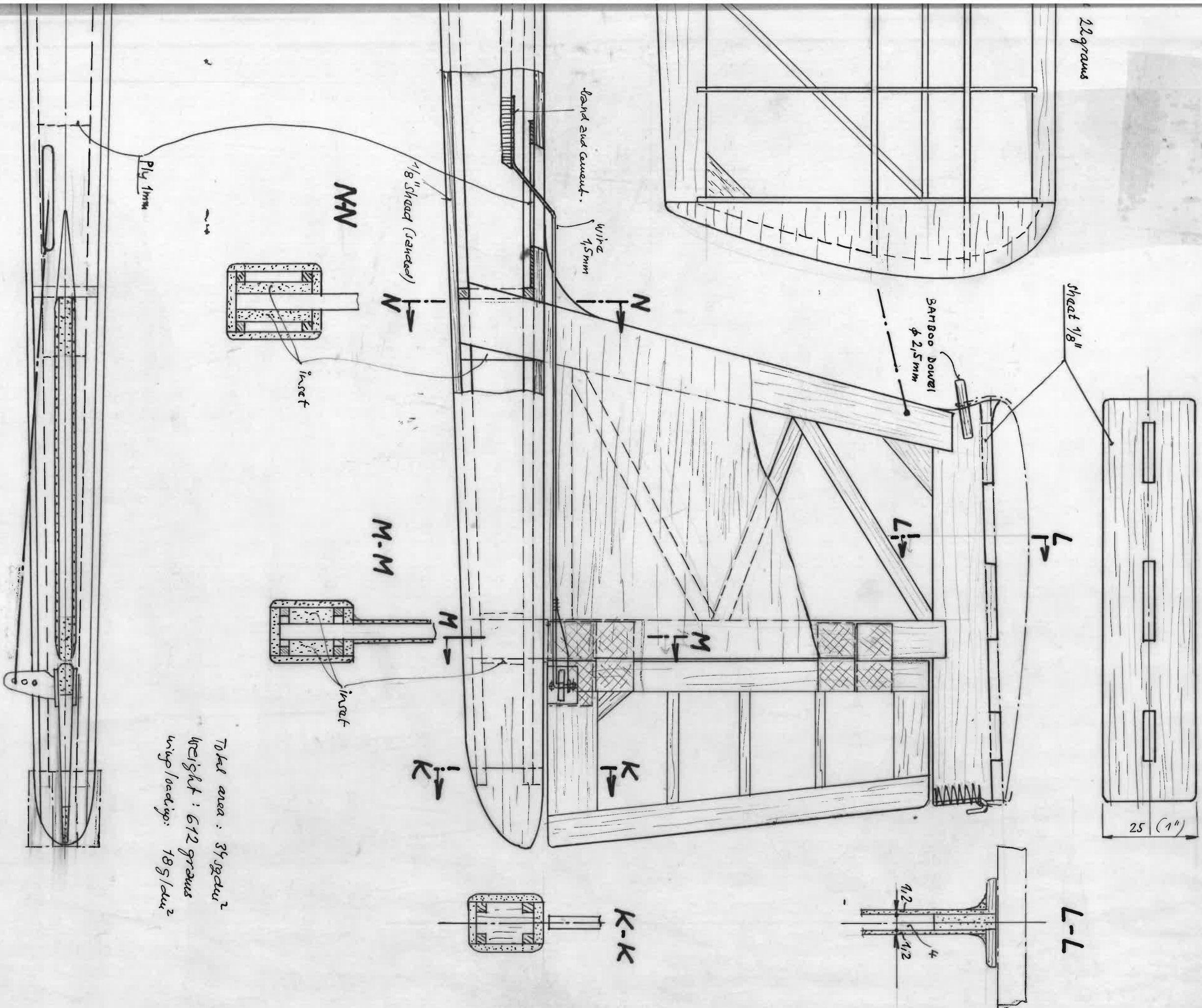
Sheeted balsa 2mm

hardwood longeron 1/8" sq

Ply 1mm







Total area: 34 sq. dm.<sup>2</sup>  
 Weight: 612 grams  
 Wing loading: 18g/dm.<sup>2</sup>

"STORK"  
 RC SINGLE-NORDIC A2  
 Rad. Attack