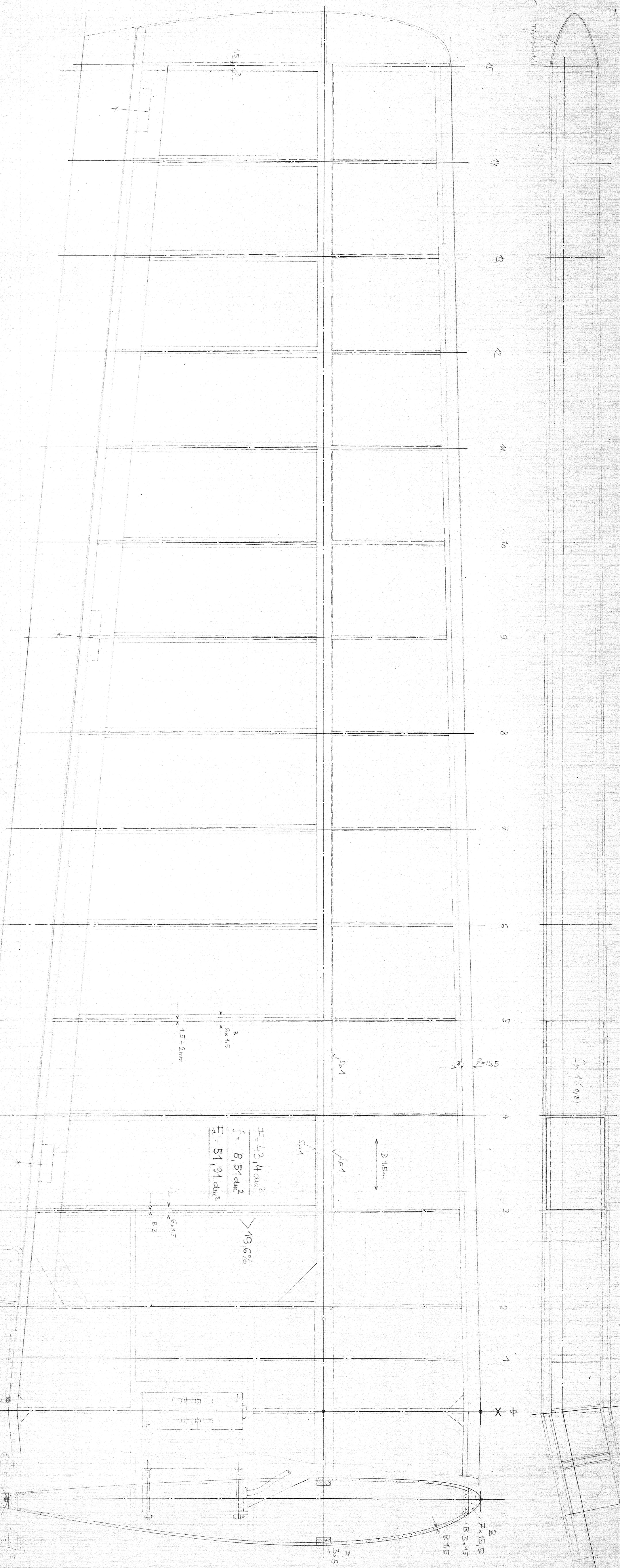
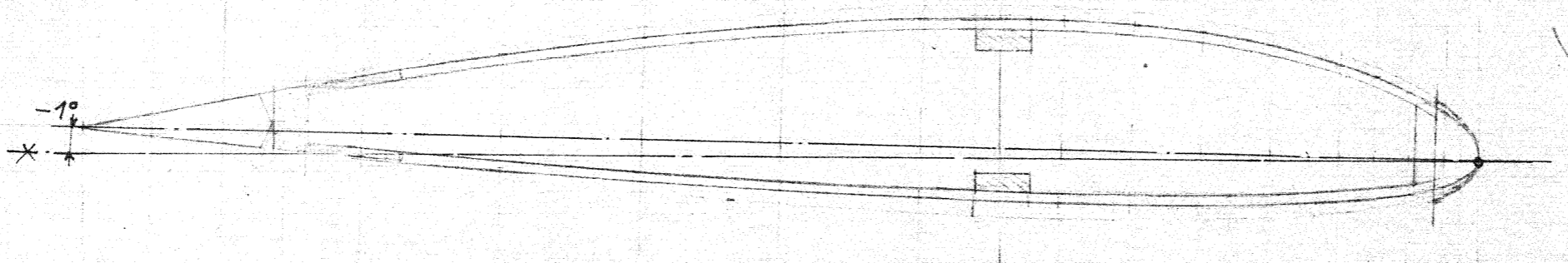


L/2 = 530 mm

Tiefenlinie



S₁ 1 (0,8)

S₂ 155

B 115 mm

f_{B1}

> 19,6%

$$F = 43,4 \text{ dm}^2$$

$$f = 8,51 \text{ dm}^2$$

$$F - f = 51,91 \text{ dm}^2$$

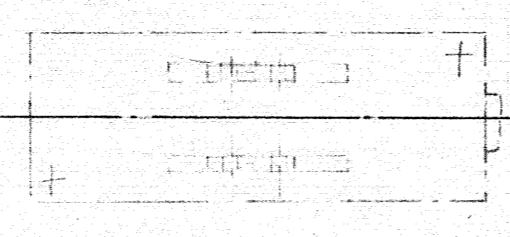
B 6 x 15
1,5 + 2 mm

S 15
> B 3

Spotter

B 7 x 15
B 3 x 15
B 15

f_{B1}



3

SUPER TAXI

1/73